

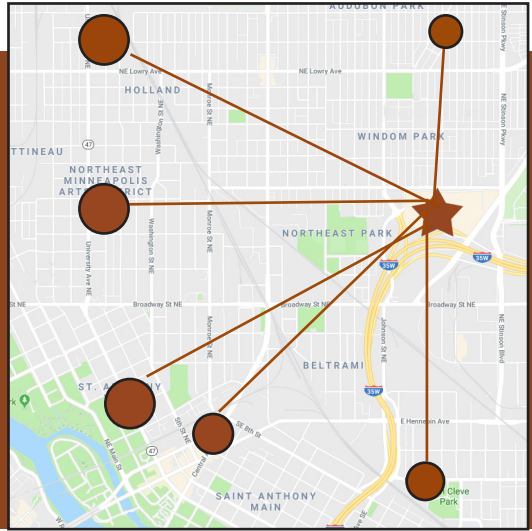
East Side Neighborhood Services

Transportation - Info and Statistics

Program Overview

Funded under contract with Trellis, as part of the Older Americans Act.

East Side Neighborhood Services Senior Transportation Department provides much needed mobility to more than 400 clients in North, Northeast, and Southeast Minneapolis as well as St. Anthony Village. Our experienced Special Transportation certified drivers provide extraordinary service to our grateful passengers, delivering them safely to their doctor visits, day programs, and necessary errands, while also providing group outings to senior living and nursing homes. We are proud to be able to deliver a valuable, affordable service to older adults.



Just a few of the stories of clients who use our transportation services:

Community: Bob Edwards grew up within a few blocks of East Side, playing sports here as a child. He and his wife moved a few neighborhoods away after they retired. But not long after their move, his wife died suddenly. Bob's son found us in his efforts to keep his father busy and fight the loneliness that comes with being a widower. We bring Bob back to his old neighborhood twice a week to have lunch and conversation with friends old and new.

Intergenerational: We first met Fran Erickson eight years ago through her mother Sharon, a client who used us for all of her medical appointments. When Fran turned 60, she started asking us to bring her to visit her mother. We drove Fran to visit Sharon regularly until Sharon passed away last year. Fran is grateful for the time she was able to spend with her mom. Now we still see Fran when she uses our service for her shopping and weekly exercise outings.

Stability: Pat O'Hara, a retired teacher's assistant and longtime caregiver, was visiting her brother in Minneapolis when she had a medical emergency that put her out of commission for weeks. Pat and her family decided to move her to Minnesota where family could help her with her ongoing health problems. Pat has many medical appointments and sometimes her family is unable to transport her, so they count on us to make it work. Her family's goal is to make sure the woman who has spent so much of her life taking care of others is taken care of in her time of need. We are honored to be a part of Team Pat.

Inclusion: Christy Johnson suffers from severe anxiety and has trouble walking. She uses us to accomplish her errands and medical appointments because she feels at ease with our drivers. Last year, we got her to a mammogram appointment that was out of her comfort zone. When she was diagnosed with breast cancer, she thanked us. Christy believes she never would have gone without our service and claims we saved her life. She is arranging her radiation therapy around when we can accommodate her.

Contact:

Transportation Program Director
Tracy Thoraldson
Cell: 612.787.4012
Email: tthoraldson@esns.org



TRELLIS

EAST SIDE
Neighborhood



Services

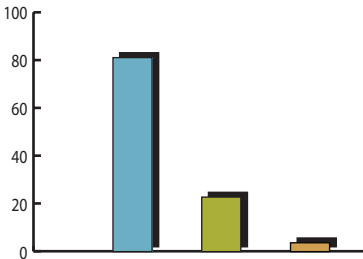
mn DEPARTMENT OF
HUMAN SERVICES

Full Service Map:



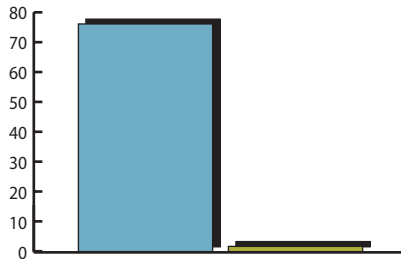
Trips:

Total: 276
 Errands: 81%
 Medical: 23%
 Social: 4%



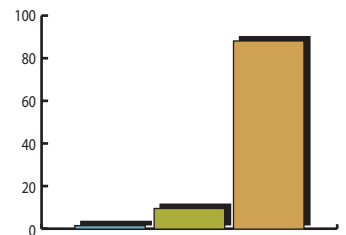
Poverty Level:

At or below poverty line: 76%
 Above poverty line: 2%



Age:

65+
 55-64
 Under 55



Location:

1700 2nd St NE Minneapolis, MN 55413
 Esns.org/transportation

Data was taken Jan 1 - Dec 31, 2022

EAST SIDE
 Neighborhood

